

List of pages in this Trip Kit

Trip Kit Index

Airport Information For KACY

Terminal Charts For KACY

Revision Letter For Cycle 05-2025

Change Notices

Notebook

General Information

Location: ATLANTIC CITY NJ USA
ICAO/IATA: KACY / ACY
Lat/Long: N39° 27.45', W074° 34.63'
Elevation: 75 ft

Airport Use: Public
Daylight Savings: Observed
UTC Conversion: +5:00 = UTC
Magnetic Variation: 10.0° W
Sectional Chart: Washington

Fuel Types: 100 Octane (LL), Jet, Jet A
Oxygen Types: HP Bottle
Repair Types: Major Airframe, Major Engine
Customs: Yes
Airport Type: IFR
Landing Fee: Yes
Control Tower: Yes
Jet Start Unit: Yes
LLWS Alert: No
Beacon: Yes

Sunrise: 1006 Z
Sunset: 0001 Z

Runway Information

Runway: 04
Length x Width: 6145 ft x 150 ft
Surface Type: asphalt
TDZ-Elev: 68 ft
Lighting: Edge

Runway: 13
Length x Width: 10001 ft x 150 ft
Surface Type: asphalt
TDZ-Elev: 75 ft
Lighting: Edge, ALS, Centerline, TDZ

Runway: 22
Length x Width: 6145 ft x 150 ft
Surface Type: asphalt
TDZ-Elev: 68 ft
Lighting: Edge

Runway: 31
Length x Width: 10001 ft x 150 ft
Surface Type: asphalt

TDZ-Elev: 63 ft
Lighting: Edge, Centerline, REIL

Communication Information

ATIS: 31.615 Military
ATIS: 125.725
Atlantic City Tower: 23.900 Military
Atlantic City Tower: 120.300
Atlantic City Ground: 121.900
Atlantic City Ground: 28.460 Military
Atlantic City Clearance Delivery: 127.850
Atlantic City Clearance Delivery: 35.377 Military
Atlantic City Approach: 23.900 Secondary Military
Atlantic City Approach: 29.220 Military
Atlantic City Approach: 32.712 Initial Contact Military
Atlantic City Approach: 134.250
Atlantic City Approach: 124.600 Initial Contact
Atlantic City Airport Radar Service Area: 124.600 (130°-309°)
Atlantic City Airport Radar Service Area: 134.250 (310°-129°)
Atlantic City Airport Radar Service Area: 32.712 (130°-309°) Military
Atlantic City Airport Radar Service Area: 29.220 (310°-129°) Military
Atlantic City Departure: 134.250
Atlantic City Departure: 124.600 Initial Contact
Atlantic City Departure: 32.712 Initial Contact Military
Devil Operations: 140.700
Faa Operations: 123.400

JEPPESEN ATLANTIC CITY, NJ
 24 NOV 23 10-3 Eff 30 New **SID**

FOR DEPARTURE CONTROL PROC. SEE GRAPHIC

Apt Elev 75

Trans alt: 18000
 1. RADAR required.
 2. Use frequency depicted within sector where your first navaid/fix/route is located or as assigned.

ATLANTIC CITY 2 DEPARTURE (ACY2.ACY) (ALL RWYS)

RWY	INITIAL CLIMB	TOP ALTITUDE
4	Climb heading 038° or as assigned by ATC.	
13	Climb heading 128° or as assigned by ATC.	2000
22	Climb heading 218° or as assigned by ATC.	
31	Climb heading 308° or as assigned by ATC.	

ROUTING

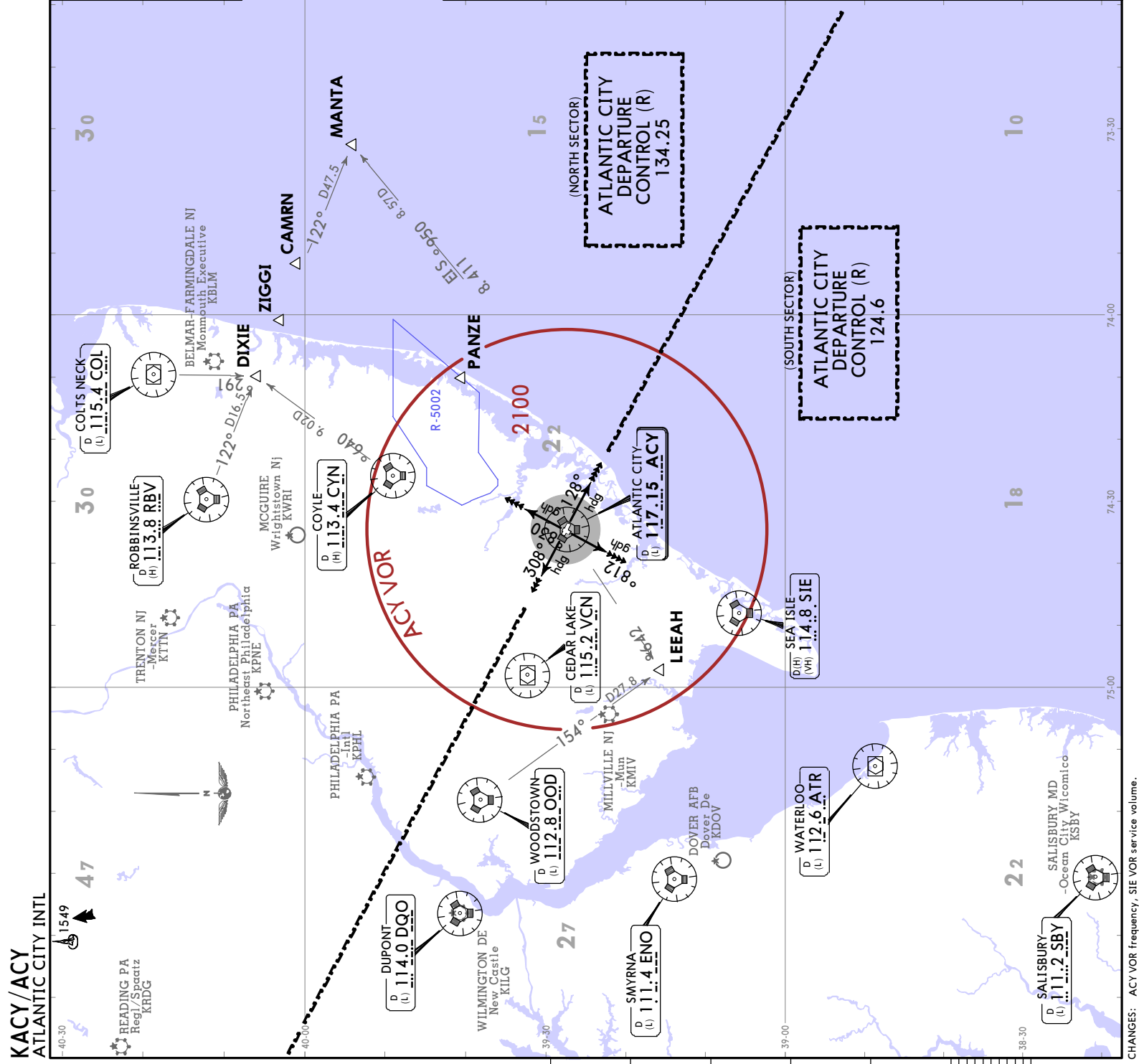
For vectors to filed/assigned route or depicted fix. MAINTAIN 2000 or assigned altitude. EXPECT clearance to filed altitude 10 minutes after departure.

TAKE-OFF OBSTACLE NOTES

Rwy 4: Sign 36 from DER, 303 right of centerline, 4 AGL/69 MSL. Tree 1942 from DER, 803 left of centerline, 127 MSL. Trees beginning 1967 from DER, 703 left of centerline, up to 130 MSL. Tree 2014 from DER, 638 left of centerline, 132 MSL. Trees beginning 2044 from DER, 440 left of centerline, up to 135 MSL. Tree 2583 from DER, 648 right of centerline, 132 MSL. Rwy 13: Navaid 42 from DER, 149 right of centerline, 2 AGL/65 MSL. Trees beginning 1161 from DER, 710 right of centerline, up to 104 MSL. Trees beginning 1575 from DER, 814 right of centerline, up to 117 MSL. Tree 1788 from DER, 922 right of centerline, 118 MSL. Rwy 22: Terrain and navaid beginning 5 from DER, 119 right of centerline, up to 63 MSL. Bush 86 from DER, 475 right of centerline, 64 MSL. Poles beginning 219 from DER, 446 left of centerline, up to 32 AGL/88 MSL. Transmission tower and pole beginning 539 from DER, 618 left of centerline, up to 90 MSL. Tree 848 from DER, 714 right of centerline, 84 MSL. Trees beginning 949 from DER, 550 right of centerline, up to 96 MSL. Tree 1186 from DER, 800 right of centerline, 98 MSL. Trees beginning 1402 from DER, 731 left of centerline, up to 116 MSL. Tree 1412 from DER, 853 right of centerline, 104 MSL. Trees beginning 2124 from DER, 271 left of centerline, up to 118 MSL. Tree 2258 from DER, 464 left of centerline, 126 MSL.

Rwy 31: Light support structure 10 from DER, 6 left of centerline, 2 AGL/76 MSL. Light support structure 11 from DER, 4 right of centerline, 2 AGL/77 MSL. Trees beginning 2405 from DER, 1114 left of centerline, up to 144 MSL.

TAKE-OFF MINIMUMS:
 Rwys 4, 13, 22, 31: Standard.



KACY/ACY

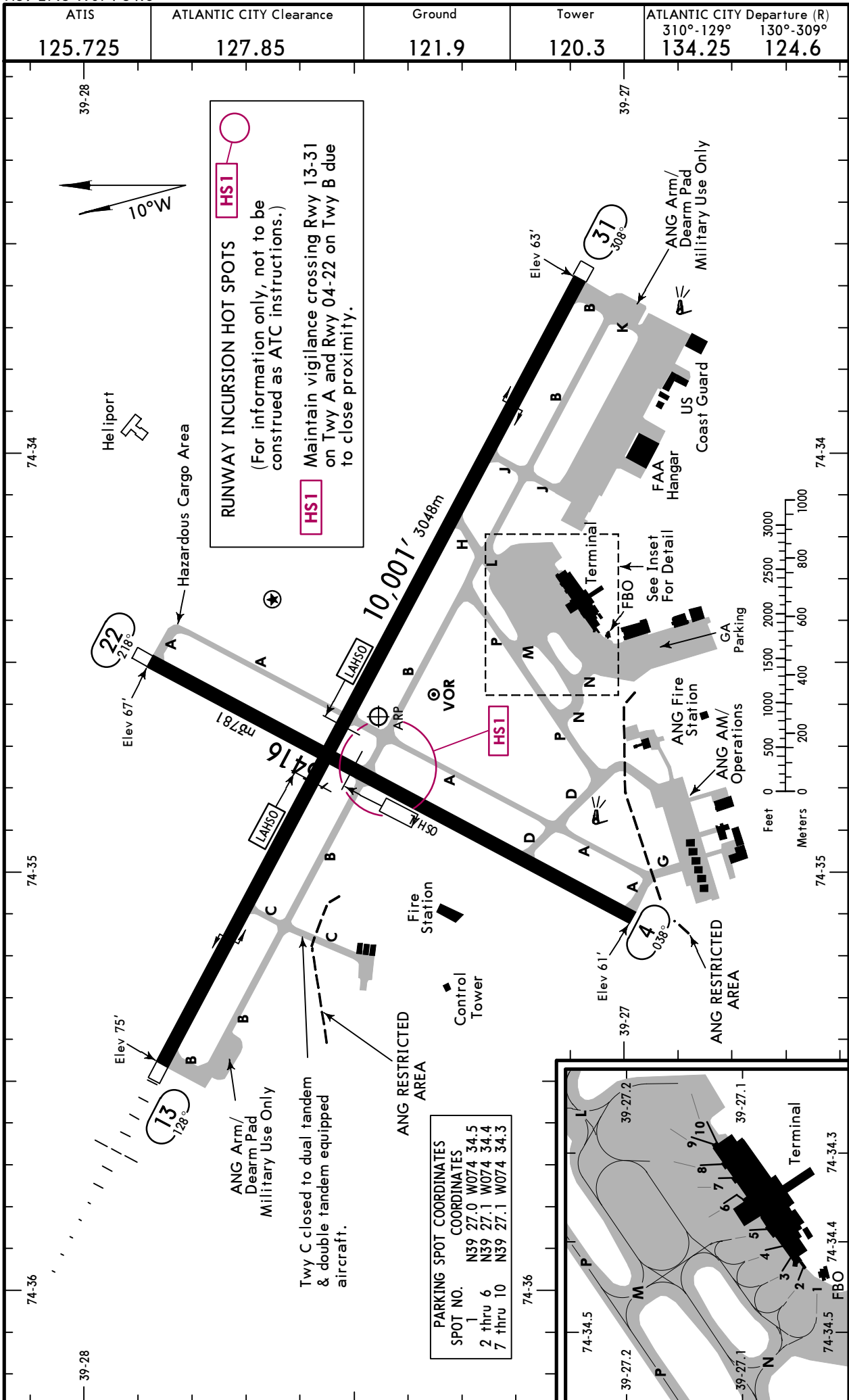
Apt Elev **75'**
N39 27.5 W074 34.6



3 JAN 25 **10-9**

ATLANTIC CITY, NJ

ATLANTIC CITY INTL



KACY/ACY



ATLANTIC CITY, NJ

3 JAN 25 (10-9A)

ATLANTIC CITY INTL

GENERAL
 High performance military aircraft operating at airport.
 No training flights 2300 to 0700 LT.
 Fox and birds on and in vicinity of airport.
 BASH Phase II in effect APR thru OCT contact base ops on 140.7 for current BASH conditions.
 Avoid centerline lights during cable engagement to prevent tailhook bounce.
 Noise abatement procedures in effect, contact airport operations.

ADDITIONAL RUNWAY INFORMATION						
RWY	Landing Beyond	USABLE LENGTHS			TAKE-OFF	WIDTH
		Threshold	Glide Slope	LAHSO Distance		
4 22	HIRL PAPI-L (angle 3.00°, TCH 50') grooved			13/31 3550'1082m		150' 46m
	HIRL VASI-L (angle 3.00°, TCH 51')					
13 31	HIRL CL MALSR TDZ ① PAPI-L grooved RVR		8892' 2710m	4/22 3600' 1097m		150' 46m
	HIRL CL REIL ② PAPI-L grooved RVR		8980' 2737m	4/22 5750' 1753m		

- ① Angle 3.00°, TCH 71'.
- ② Angle 3.00°, TCH 69'.

TERPS					
TAKE-OFF					
Rwys 13, 31					
LOWER THAN STANDARD OpSpec Authorization Required				STANDARD	
Both RVRs are required & controlling			RCLM or CL or HIRL or Adequate Vis Ref	3 & 4 Eng	1 & 2 Eng
CL & HIRL	CL, or RCLM & HIRL	RCLM (day only) or CL or HIRL			
TDZ RVR 5 Rollout RVR 5	TDZ RVR 10 Rollout RVR 10	TDZ RVR 12 Rollout RVR 10	TDZ RVR 16 or 1/4	RVR 24 or 1/2	RVR 50 or 1
Rwys 4, 22					
LOWER THAN STANDARD OpSpec Authorization Required			STANDARD		
RCLM or HIRL or Adequate Vis Ref			3 & 4 Eng	1 & 2 Eng	
1/4			1/2	1	

TAKE-OFF OBSTACLE NOTES: Rwy 4, sign 36' from DER, 303' right of centerline, 4' AGL/69' MSL. Tree 1942' from DER, 803' left of centerline, 127' MSL. Trees beginning 1967' from DER, 703' left of centerline, up to 130' MSL. Tree 2014' from DER, 638' left of centerline, 132' MSL. Trees beginning 2044' from DER, 440' left of centerline, up to 135' MSL. Tree 2583' from DER, 648' right of centerline, 132' MSL.

Rwy 13, NAVAID 42' from DER, 149' right of centerline, 2' AGL/65' MSL. Trees beginning 1161' from DER, 710' right of centerline, up to 104' MSL. Trees beginning 1575' from DER, 814' right of centerline, up to 117' MSL. Tree 1788' from DER, 922' right of centerline, 118' MSL.

Rwy 22, terrain and NAVAID beginning 5' from DER, 119' right of centerline, up to 63' MSL. Bush 86' from DER, 475' right of centerline, 64' MSL. Poles beginning 219' from DER, 446' left of centerline, up to 32' AGL/88' MSL. Transmission tower and pole beginning 539' from DER, 618' left of centerline, up to 90' MSL. Tree 848' from DER, 714' right of centerline, 84' MSL. Trees beginning 949' from DER, 550' right of centerline, up to 96' MSL. Tree 1186' from DER, 800' right of centerline, 98' MSL. Trees beginning 1402' from DER, 731' left of centerline, up to 116' MSL. Tree 1412' from DER, 853' right of centerline, 104' MSL. Trees beginning 2124' from DER, 271' left of centerline, up to 118' MSL. Tree 2258' from DER, 464' left of centerline, 126' MSL.

Rwy 31, light support structure 10' from DER, 6' left of centerline, 2' AGL/76' MSL. Light support structure 11' from DER, 4' right of centerline, 2' AGL/77' MSL. Trees beginning 2405' from DER, 1114' left of centerline, up to 144' MSL.

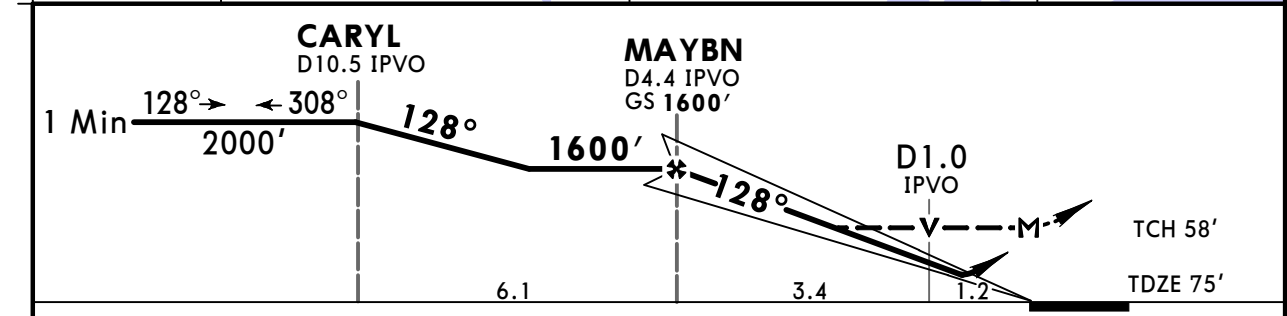
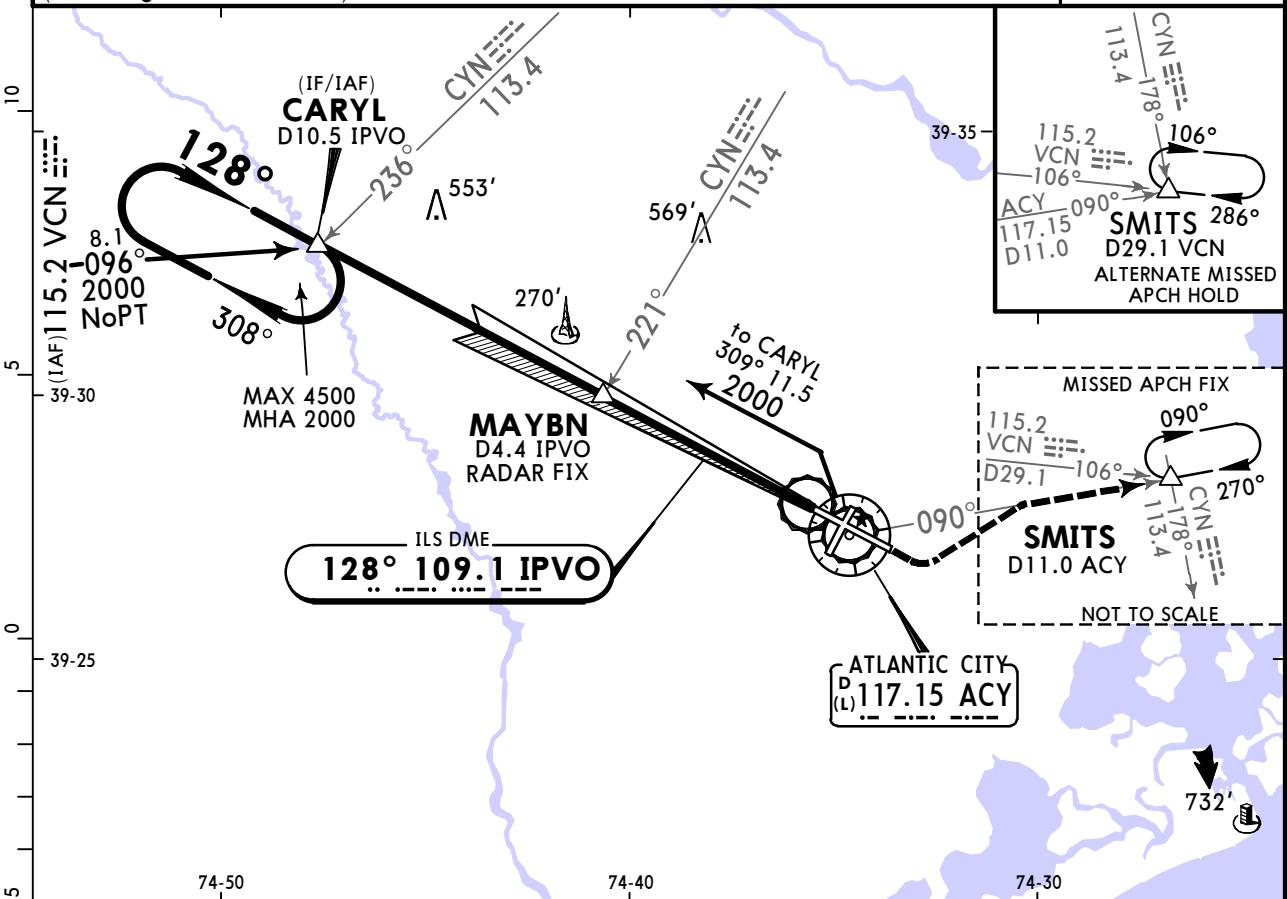
FOR FILING AS ALTERNATE			
ILS Z Rwy 13 ILS Rwy 31	LOC Z Rwy 13 LOC DME Rwy 31 RNAV (GPS) Rwy 4 RNAV (GPS) Y Rwy 13	RNAV (GPS) Rwy 22 RNAV (GPS) Y Rwy 31 RNAV (RNP) Z Rwy 31 VOR Rwy 4 VOR Rwy 31	RNAV (RNP) Z Rwy 13 Copter ILS Rwy 13 Copter LOC DME Rwy 13
A	600-2	800-2	NA
B			
C			
D			

KACY/ACY ATLANTIC CITY INTL

JEPPESSEN
5 JUL 24 (11-1)

ATLANTIC CITY, NJ ILS Z or LOC Z Rwy 13

ATIS 125.725		ATLANTIC CITY Approach (R) 124.6		ATLANTIC CITY Tower 120.3		Ground 121.9	
LOC IPVO 109.1	Final Apch Crs 128°	MAYBN 1600' (1525')		ILS DA(H) 275' (200')	Apt Elev 75' TDZE 75'		
MISSED APCH: Climb to 600' then climbing LEFT turn to 2000' outbound on ACY VOR R-090 to SMITS INT/D11.0 ACY and hold.							
Alt Set: INCHES		Trans level: FL 180		Trans alt: 18000'			
1. Use IPVO DME when on the LOC course. 2. VGSI and ILS glidepath not coincident (VGSI angle 3.00°/TCH 71').							MSA ACY VOR



Gnd speed-Kts	70	90	100	120	140	160	MALSR PAPI 600' ↑ 2000' ↙ LT	ACY on 117.15 R-090 SMITS
GS	3.00°	372	478	531	637	743		
MAYBN to MAP	4.6	3:57	3:04	2:46	2:18	1:58	1:43	

TERPS				STRAIGHT-IN LANDING RWY 13		CIRCLE-TO-LAND	
ILS		LOC (GS out)		CIRCLE-TO-LAND		CIRCLE-TO-LAND	
DA(H) 275' (200')		MDA(H) 520' (445')		Max Kts		MDA(H)	
TDZ/CL out		RAIL/ALS out		RAIL/ALS out		MDA(H)	
A				RVR 24 or 1/2	RVR 50 or 1	90	540'(465') - 1
B						120	600'(525') - 1
C	RVR 18 or 1/2	RVR 24 or 1/2	RVR 40 or 3/4			140	620'(545') - 1 1/2
D				RVR 45 or 7/8	1 3/8	165	640'(565') - 2

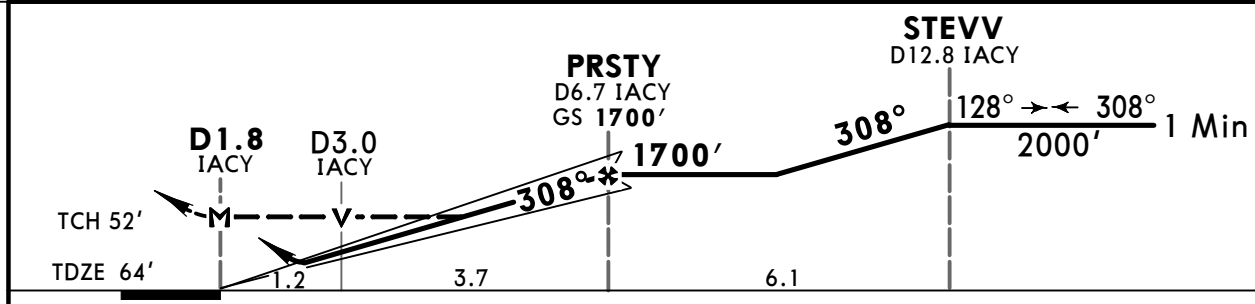
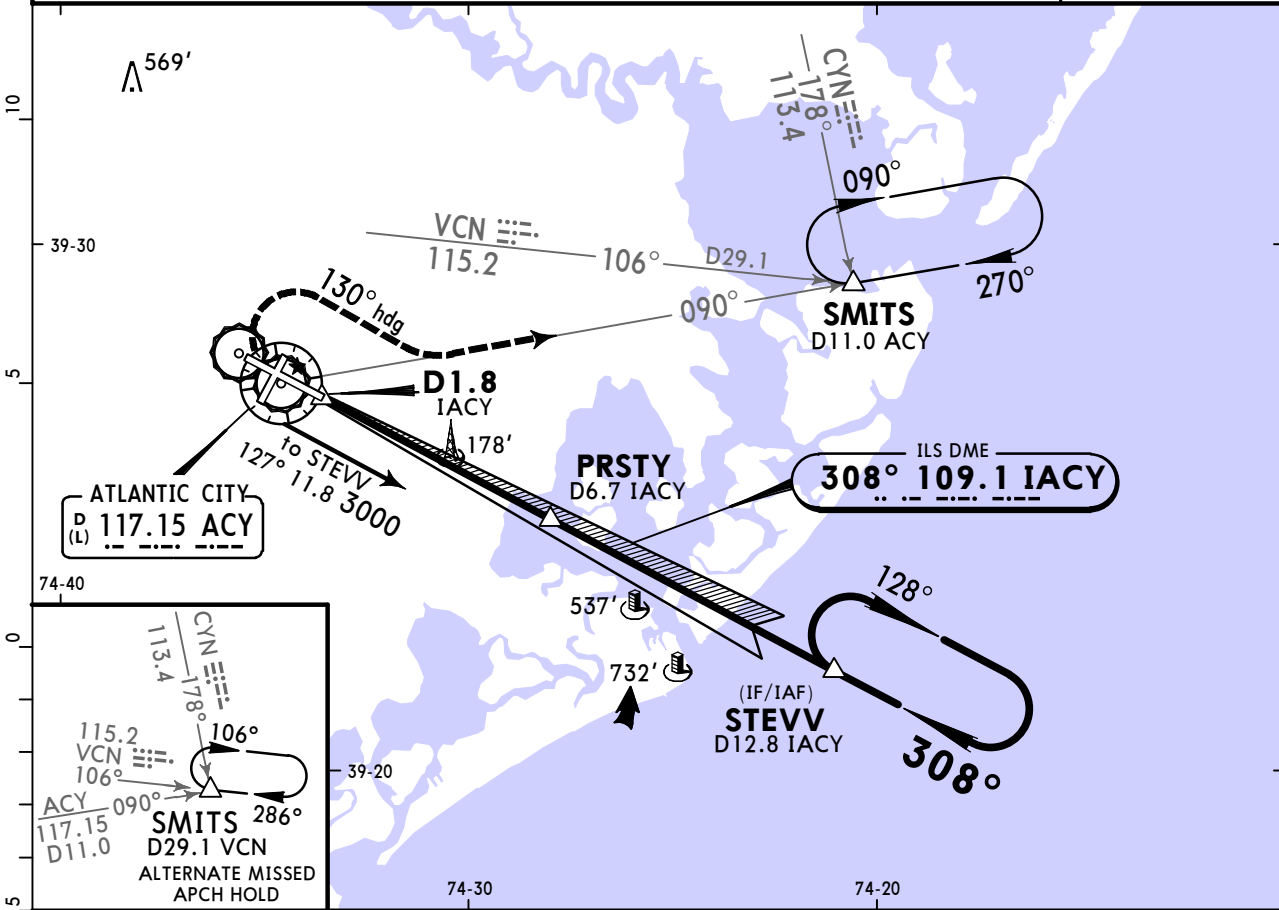
TERPS AMEND 8E 10 AUG 2023
 1 RVR 18 with Flight Director or Autopilot or HUD to DA.
 CHANGES: Topo, chart format. © JEPPESSEN, 2001, 2024. ALL RIGHTS RESERVED.

KACY/ACY ATLANTIC CITY INTL

JEPPesen
5 JUL 24 **(11-2)**

ATLANTIC CITY, NJ ILS or LOC DME Rwy 31

ATIS 125.725		ATLANTIC CITY Approach (R) 124.6		ATLANTIC CITY Tower 120.3		Ground 121.9		
LOC IACY 109.1	Final Apch Crs 308°	PRSTY 1700' (1636')	ILS DA(H) 264' (200')	Apt Elev 75' TDZE 64'		<div style="border: 1px solid black; border-radius: 50%; width: 100px; height: 100px; display: flex; align-items: center; justify-content: center;">2100</div> <p>MSA ACY VOR</p>		
MISSED APCH: Climb to 500', then climbing RIGHT turn to 2000' via 130° heading and outbound via ACY VOR R-090 to SMITS INT/D11.0 ACY and hold.								
Alt Set: INCHES		Trans level: FL 180		Trans alt: 18000'				
1. DME required. 2. Use IACY DME when on LOC course. 3. VGSI and ILS glidepath not coincident.								



Gnd speed-Kts	70	90	100	120	140	160	REIL PAPI-L	500'	2000'	via 130° hdg
GS	3.00°	372	478	531	637	743				
MAP at D1.8 IACY										

TERPS	STRAIGHT-IN LANDING RWY31		Max Kts	CIRCLE-TO-LAND	
	ILS DA(H) 264' (200')	LOC (GS out) MDA(H) 520' (456')		MDA(H)	
A	RVR 40 or $\frac{3}{4}$	RVR 55 or 1	90	540' (465') -1	
B			120	600' (525') -1	
C			140	620' (545') -1½	
D			165	640' (565') -2	

TERPS ORIG-E 16 OCT 2014

CHANGES: LOC minimums, topo.

KACY/ACY

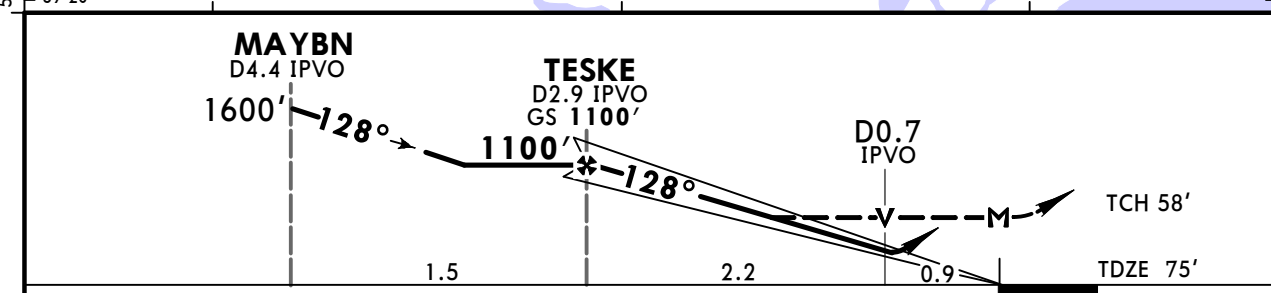
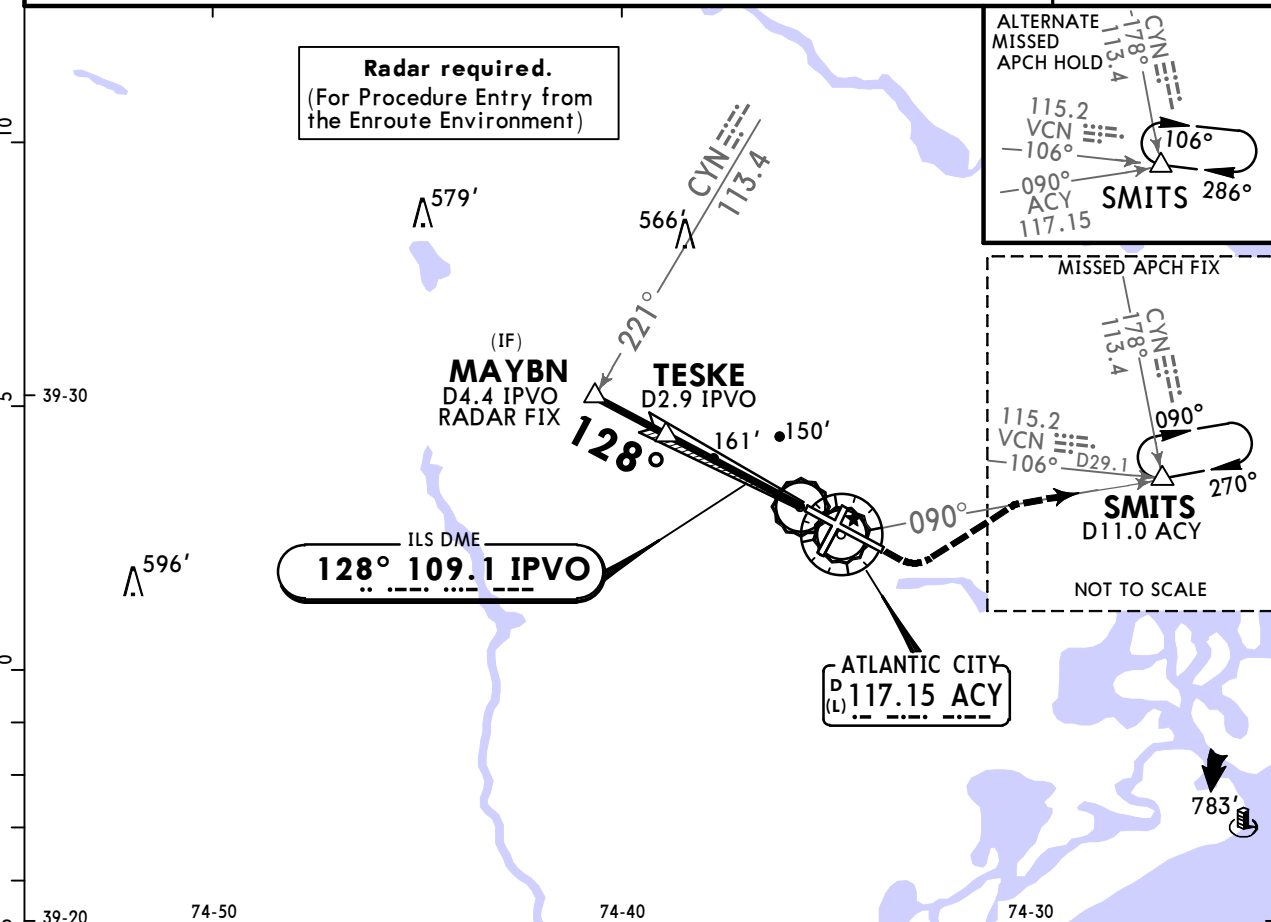
ATLANTIC CITY INTL

JEPPESEN
 24 NOV 23
 Eff 30 Nov **(11-3)**

ATLANTIC CITY, NJ

COPTER ILS or LOC DME Rwy 13

ATIS 125.725		ATLANTIC CITY Approach (R) 124.6		ATLANTIC CITY Tower 120.3		Ground 121.9	
LOC IPVO 109.1	Final Apch Crs 128°	TESKE 1100' (1025')	ILS DA(H) 275' (200')	Apt Elev 75' TDZE 75'			
MISSED APCH: Climb to 600' then climbing LEFT turn to 2000' outbound via ACY VOR R-090 to SMITS INT/D11.0 ACY and hold.							MSA ACY VOR
Alt Set: INCHES		Trans level: FL 180		Trans alt: 18000'			
1. VGSI and ILS glidepath not coincident. 2. Use IPVO DME when on the localizer							



Gnd speed-Kts	70	90	100	120	140	160	MALSR	600'	2000'	ACY via 117.15 R-090	SMITS
GS	3.00°	372	478	531	637	849					
TESKE to MAP	3.0	2:34	2:00	1:48	1:30	1:17	1:08	↑	LT		

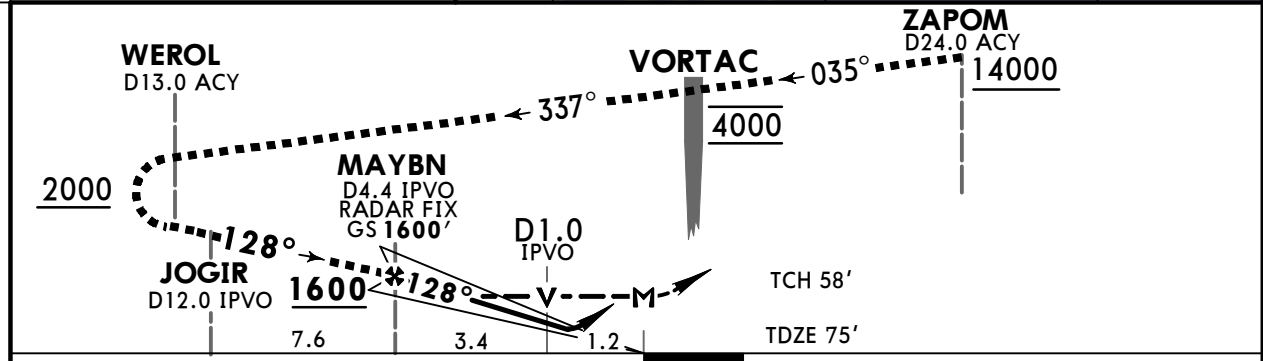
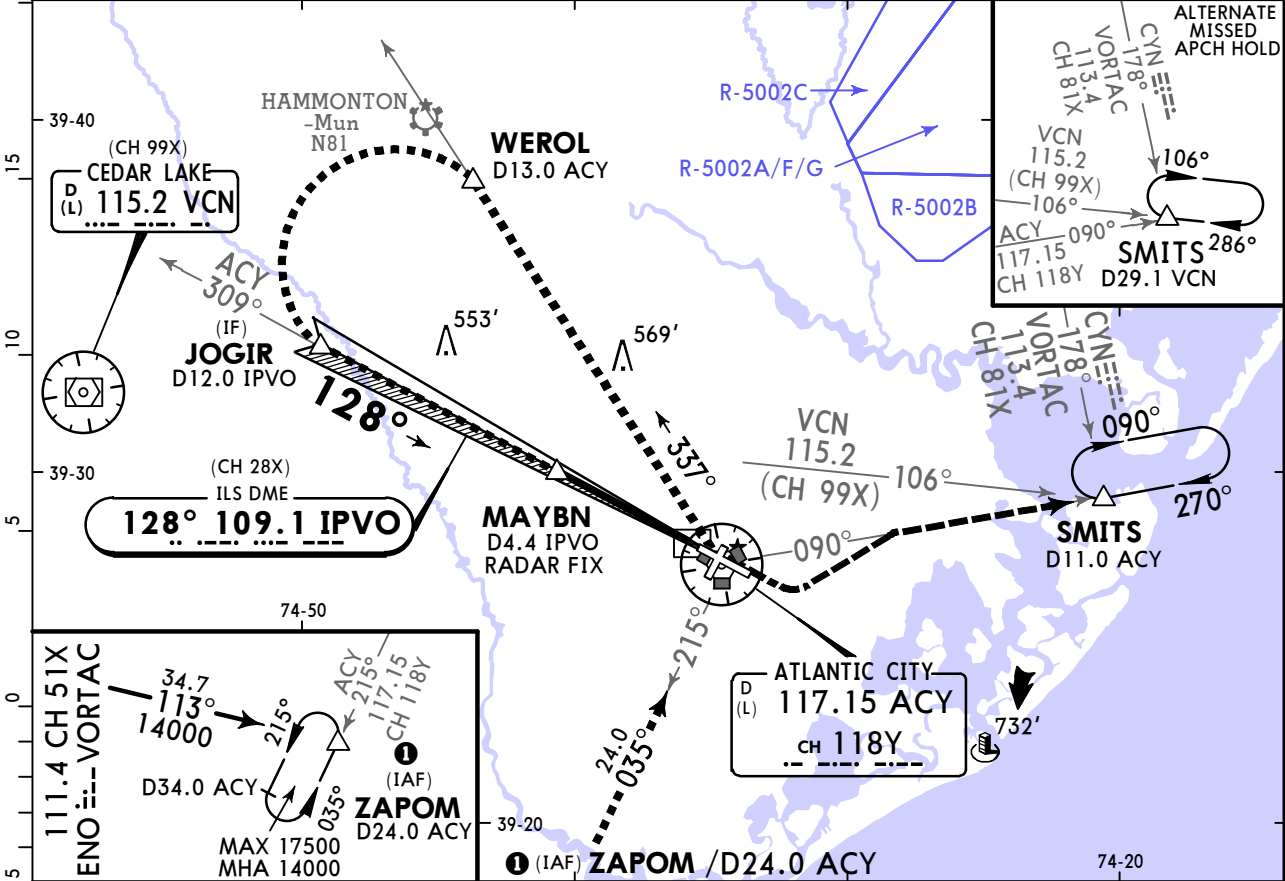
STRAIGHT-IN LANDING RWY 13			
ILS DA(H) 275' (200')			LOC (GS out) MDA(H) 420' (345')
FULL	TDZ/CL out	RAIL/ALS out	RAIL/ALS out
RVR 12 or 1/4	RVR 16 or 1/4	RVR 24 or 1/2	RVR 24 or 1/2

TERPS AMEND 1C 7 FEB 2013

KACY/ACY ATLANTIC CITY INTL **JEPPESEN** CAT C, D & E ATLANTIC CITY, NJ

25 OCT 24 **Eff 31 Oct** (11-4) HI-ILS Y or LOC Y Rwy 13

ATIS		ATLANTIC CITY Approach (R)		ATLANTIC CITY Tower		Ground	
125.725	316.15	124.6	327.125	120.3	239.0	121.9	284.6
LOC IPVO 109.1 (CH 28X)	Final Apch Crs 128°	MAYBN 1600' (1525')		ILS DA(H) 275' (200')	Apt Elev 75' TDZE 75'		
MISSED APCH: Climb to 600' then climbing LEFT turn to 2000' on ACY VORTAC R-090 to SMITS INT/D11.0 ACY and hold.							
Alt Set: INCHES		Trans level: FL 180		Trans alt: 18000'			
1. DME or RADAR required. 2. EMERG SAFE ALT 100 NM 4100'. 3. Use IPVO DME when on the LOC course. 4. VGSI and ILS glidepath not coincident (VGSI angle 3.00°/TCH 71').							



Gnd speed-Kts	70	90	100	120	140	160	MALSR 	600' 	2000' 	ACY 117.15 CH 118Y R-090	SMITS
GS	3.00°	372	478	531	637	849					
MAYBN to MAP	4.6	3:57	3:04	2:46	2:18	1:58					

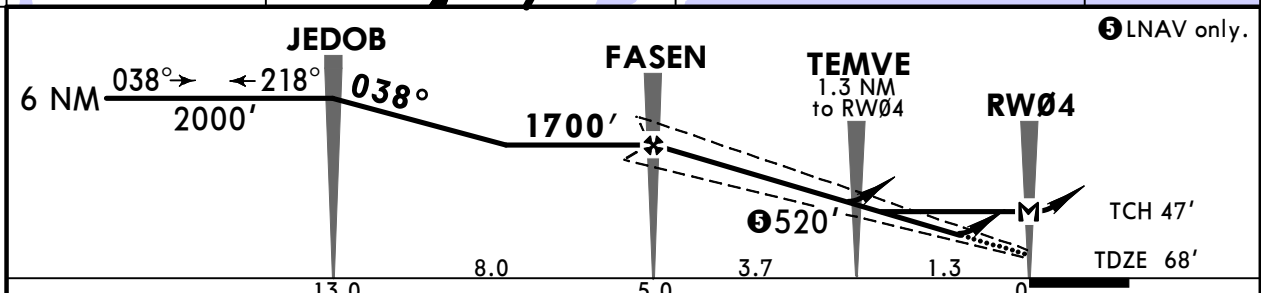
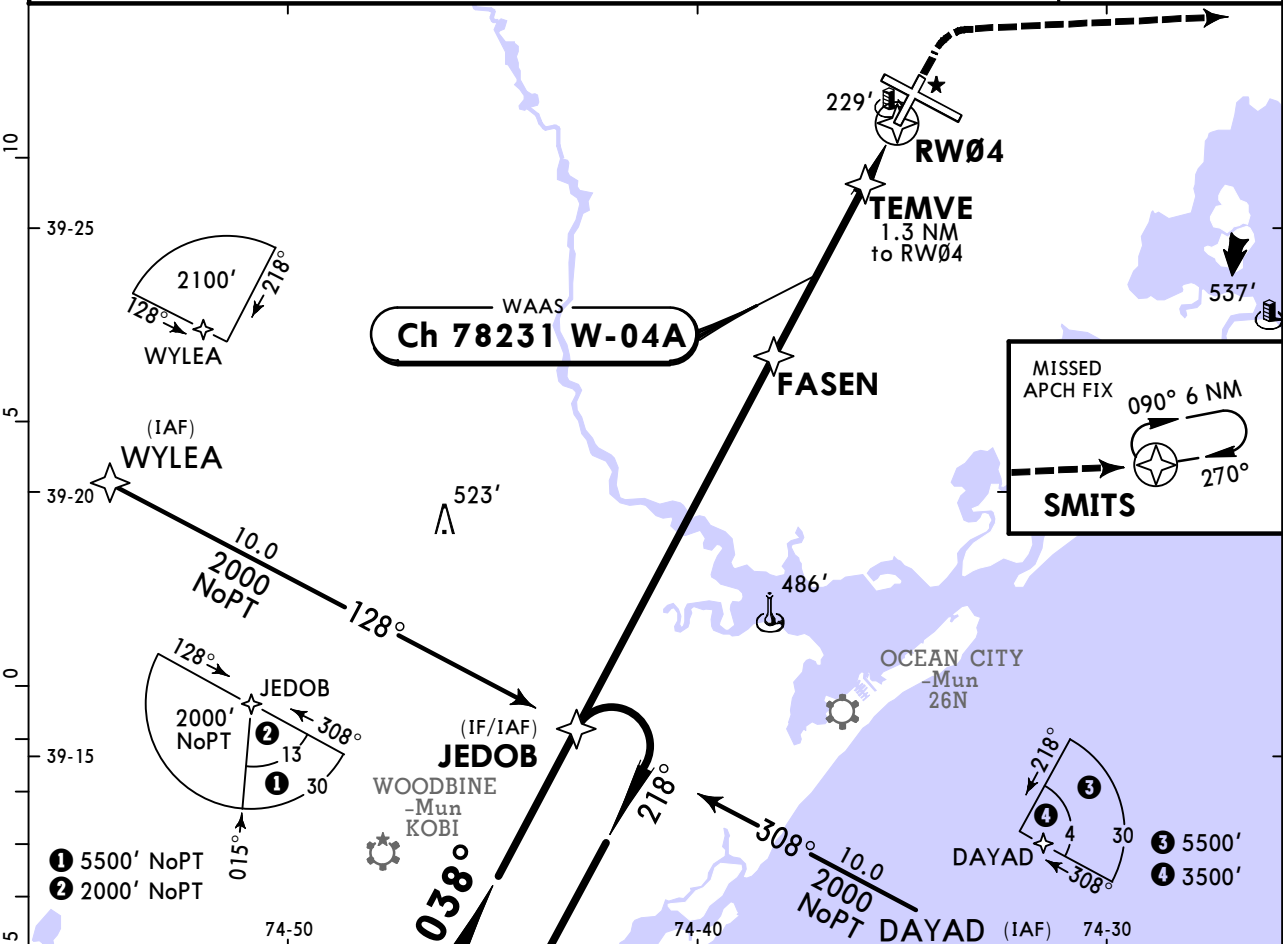
TERPS MIL (USAF) AMEND 4E	Military				STRAIGHT-IN LANDING				CIRCLE-TO-LAND			
	ILS		LOC (GS out)		ALS out		ALS out		Max Kts		MDA(H)	
	DA(H) 275' (200')		MDA(H) 520' (445')									
	NOT APPLICABLE		NOT APPLICABLE									
	A/B	200'- R18 or V1/2		200'- R40 or V3/4		500'- R45 or V7/8		500'- V1 3/8		140	620' (545') 600'- V1 1/2	
C									165	640' (565') 600'- V2		
D									200	760' (685') 700'- V2 1/2		
E												

KACY/ACY ATLANTIC CITY INTL

JEPPESSEN
3 SEP 21 (12-1)

ATLANTIC CITY, NJ RNAV (GPS) Rwy 4

ATIS 125.725		ATLANTIC CITY Approach (R) 124.6		ATLANTIC CITY Tower 120.3		Ground 121.9	
WAAS Ch 78231 W-04A		Final Apch Crs 038°		FASEN 1700' (1632')		LPV DA(H) 318' (250') Apt Elev 75' TDZE 68'	
MISSED APCH: Climb to 600' then climbing RIGHT turn to 2000' direct SMITS and hold.							TAA 30 NM IAF
RNP Apch - GPS		Alt Set: INCHES		Trans level: FL 180		Trans alt: 18000'	
1. For uncompensated Baro-VNAV systems, LNAV/VNAV not authorized below -13°C (9°F) or above 54°C (130°F). 2. Rwy 4 helicopter visibility reduction below 3/4 SM not authorized.							



Gnd speed-Kts	70	90	100	120	140	160	PAPI-L	600'	2000'	D →	SMITS
Glide Path Angle	3.00°	372	478	531	637	849					
MAP at RW04											

TERPS		STRAIGHT-IN LANDING RWY 4			CIRCLE-TO-LAND		
LPV		LNAV/VNAV		LNAV		Max Kts	MDA(H)
DA(H) 318' (250')		DA(H) 534' (466')		MDA(H) 480' (412')			
A	1	1 5/8	1 1/8	1	90	540' (465') - 1	
B					120	600' (525') - 1	
C					140	620' (545') - 1 1/2	
D					165	640' (565') - 2	

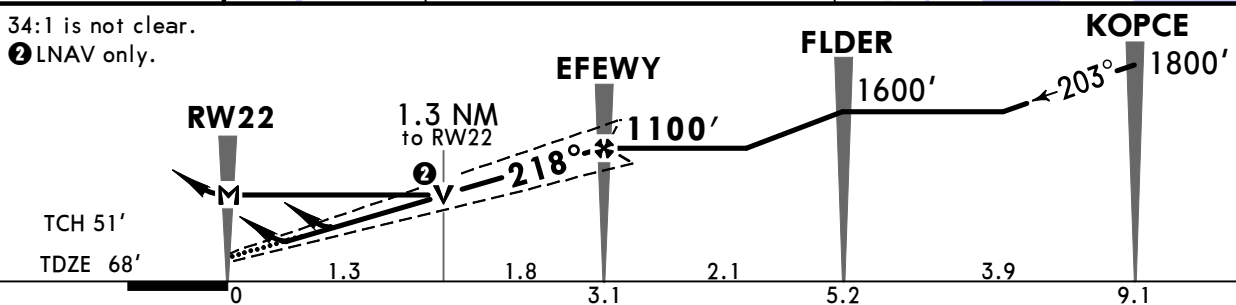
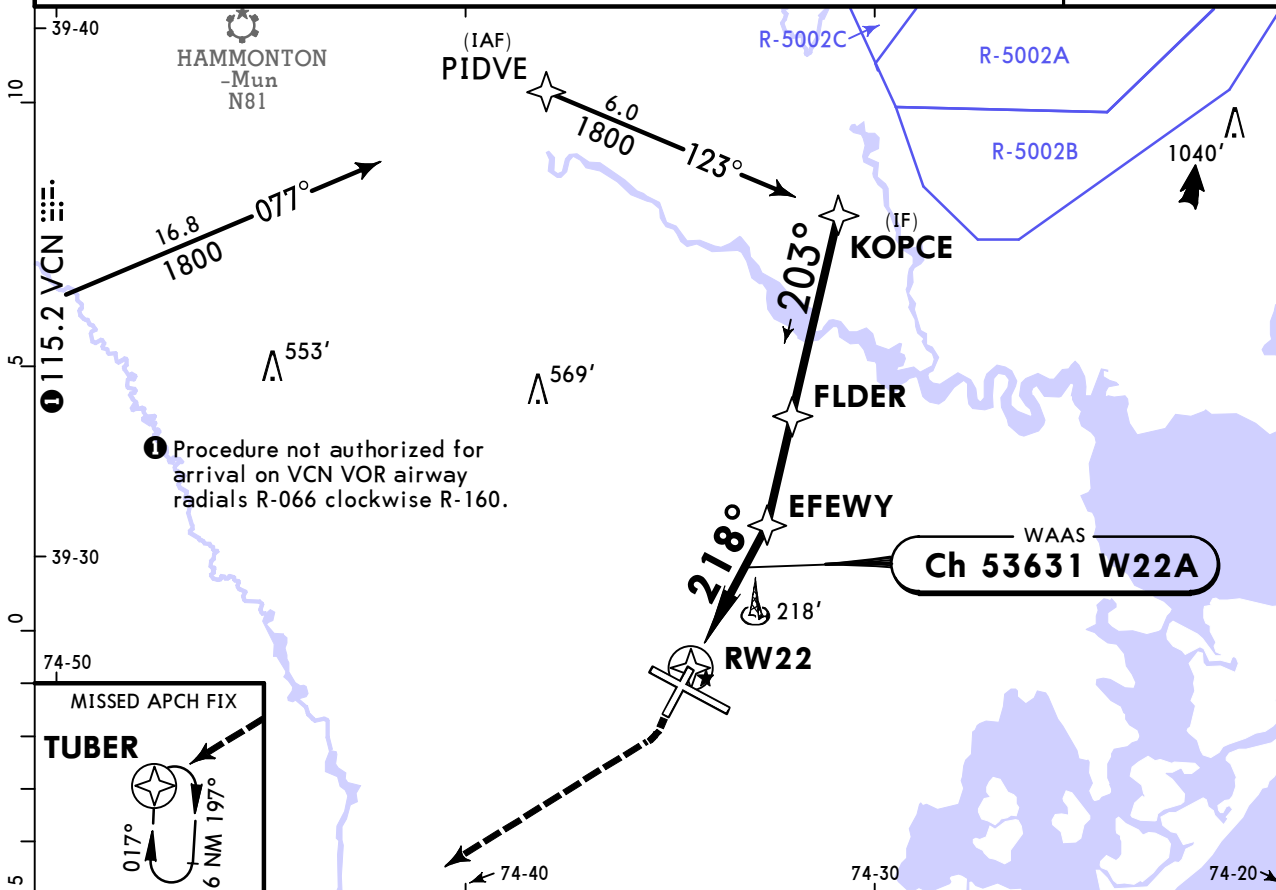
TERPS AMEND 2C 29 MAY 2014

KACY/ACY ATLANTIC CITY INTL

JEPPesen
5 JUL 24 (12-3)

ATLANTIC CITY, NJ RNAV (GPS) Rwy 22

ATIS 125.725		ATLANTIC CITY Approach (R) 124.6		ATLANTIC CITY Tower 120.3		Ground 121.9		
WAAS Ch 53631 W22A		Final Apch Crs 218°		EFEWY 1100' (1032')		LNAV/VNAV DA(H) 356' (288')		
				Apt Elev 75' TDZE 68'				
MISSED APCH: Climb to 600' then climbing RIGHT turn to 2000' direct TUBER and hold.								
RNP Apch - GPS		Alt Set: INCHES		Trans level: FL 180				Trans alt: 18000'
1. Radar required, when R-5002B is active. 2. For uncompensated Baro-VNAV systems LNAV/VNAV not authorized below -14°C (7°F) or above 54°C (130°F). 3. Rwy 22 helicopter visibility reduction below 3/4 SM not authorized.								



Gnd speed-Kts	70	90	100	120	140	160	VASI-L	600'	2000'	D → TUBER
Glide Path Angle 3.00°	372	478	531	637	743	849				
MAP at RW22										

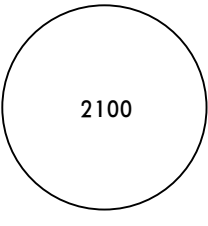
TERPS			STRAIGHT-IN LANDING RWY 22			CIRCLE-TO-LAND	
	LPV	LNAV/VNAV	LNAV			Max Kts	MDA(H)
A	DA(H) 364' (296')	DA(H) 356' (288')	MDA(H) 520' (452')			90	540' (465') - 1
B						120	600' (525') - 1
C	1	7/8				140	620' (545') - 1 1/2
D						165	640' (565') - 2

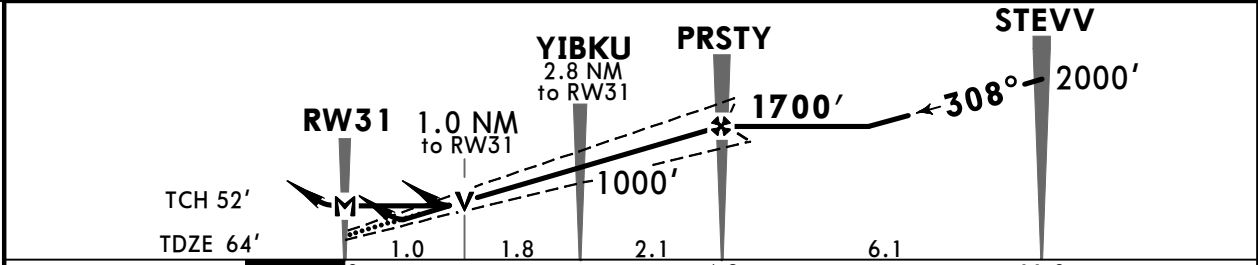
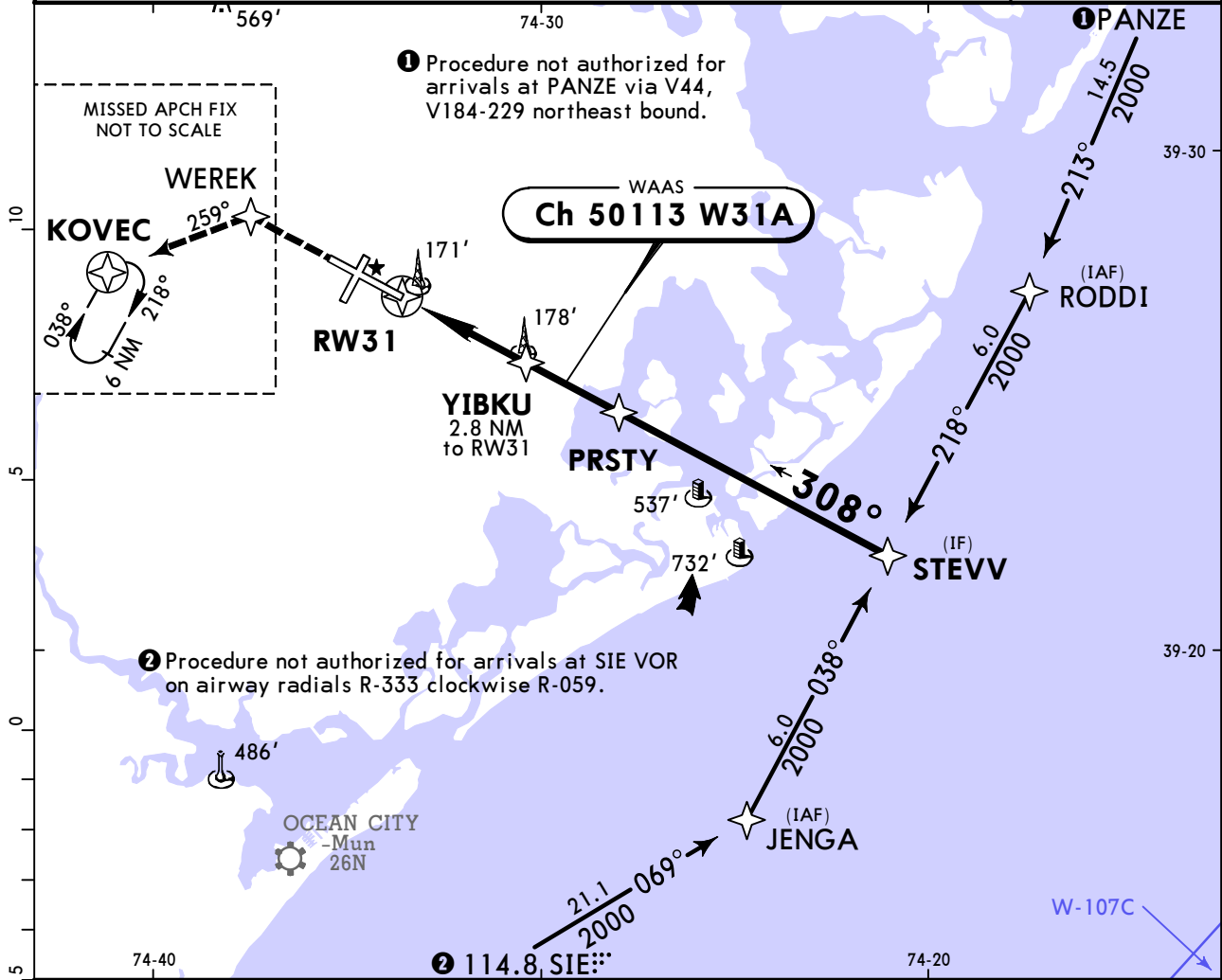
TERPS AMEND 4C 12 OCT 2017

KACY/ACY ATLANTIC CITY INTL

JEPPESSEN
5 JUL 24 (12-4)

ATLANTIC CITY, NJ RNAV (GPS) Y Rwy 31

ATIS 125.725		ATLANTIC CITY Approach (R) 124.6		ATLANTIC CITY Tower 120.3		Ground 121.9			
WAAS Ch 50113 W31A		Final Apch Crs 308°		PRSTY 1700' (1636')		LPV DA(H) 264' (200')			
				Apt Elev 75' TDZE 64'		 2100 MSA RW31			
MISSED APCH: Climb to 2000' direct WEREK and on track 259° to KOVEC and hold.									
RNP Apch - GPS Alt Set: INCHES Trans level: FL 180 Trans alt: 18000' 1. For uncompensated Baro-VNAV systems, LNAV/VNAV not authorized below -15°C or above 48°C. 2. VGSI and RNAV glidepath not coincident.									



Gnd speed-Kts	70	90	100	120	140	160	REIL PAPI-L	2000'	D →	WEREK
Glide Path Angle	3.00°	372	478	531	637	849				
MAP at RW31										

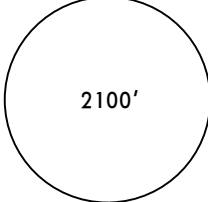
STRAIGHT-IN LANDING RWY 31						CIRCLE-TO-LAND	
LPV DA(H) 264' (200')		LNAV/VNAV DA(H) 422' (358')		LNAV MDA(H) 441' (377')		Max Kts	MDA(H)
A	RVR 40 or 3/4	RVR 60 or 1/4	RVR 55 or 1	90	540'(465') - 1		
B				120	600'(525') - 1		
C				140	620'(545') - 1 1/2		
D				165	640'(565') - 2		

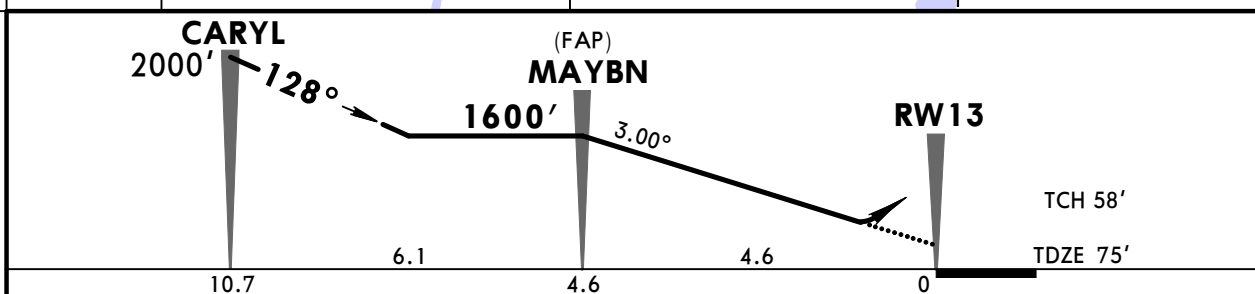
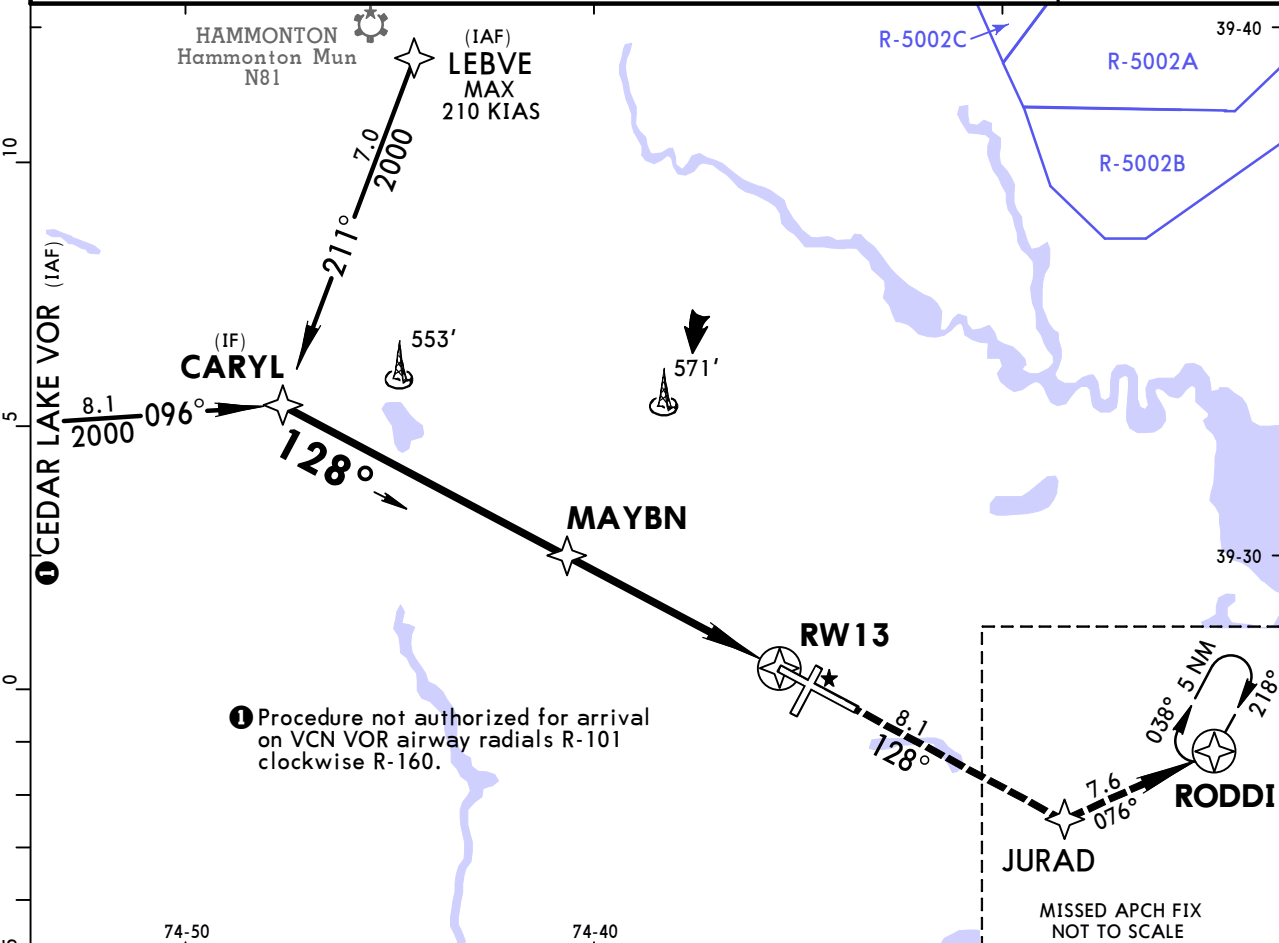
TERPS AMEND 3B 23 SEP 2010

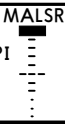
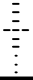
KACY/ACY ATLANTIC CITY INTL

JEPPESEN
6 OCT 17
Eff 12 Oct 12-20

ATLANTIC CITY, NJ RNAV (RNP) Z Rwy 13

ATIS 125.725		ATLANTIC CITY Approach (R) 124.6		ATLANTIC CITY Tower 120.3		Ground 121.9	
RNAV	Final Apch Crs 128°	Minimum Alt MAYBN 1600' (1525')	RNP 0.30 DA(H) 442' (367')	Apt Elev 75' TDZE 75'		 2100' MSA RW13	
MISSED APCH: Climb to 2000' on track 128° to JURAD and on track 076° to RODDI and hold.							
Alt Set: INCHES Trans level: FL 180 Trans alt: 18000' 1. AUTHORIZATION REQUIRED. 2. GPS required. 3. For uncompensated Baro-VNAV systems, procedure not authorized below -13°C (9°F) or above 54°C (130°F). 4. VGSi and RNAV glidepath not coincident (VGSi angle 3.00°/TCH 71').							



Gnd speed-Kts	70	90	100	120	140	160	MALSR  PAPI  2000' on 128° JURAD
Descent angle 3.00°	372	478	531	637	743	849	
MAP at DA							

STRAIGHT-IN LANDING RWY 13
RNP 0.30
 DA(H) **442'** (367')

RAIL/ALS out	
A	
B	
C	RVR 40 or 3/4
D	RVR 60 or 1/4

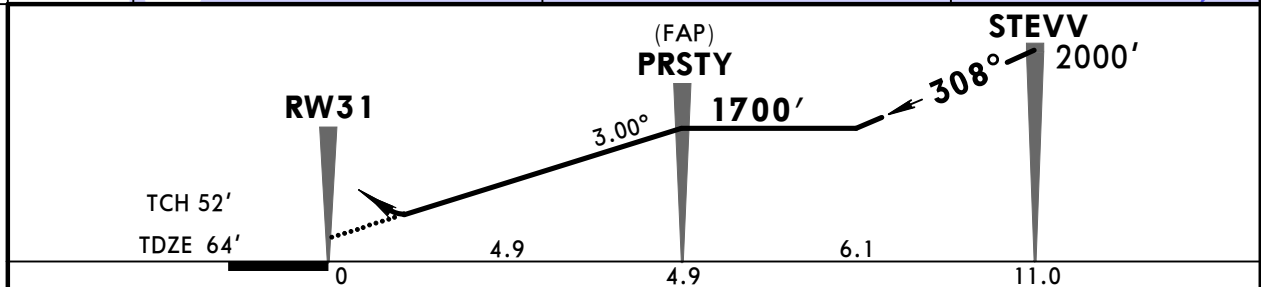
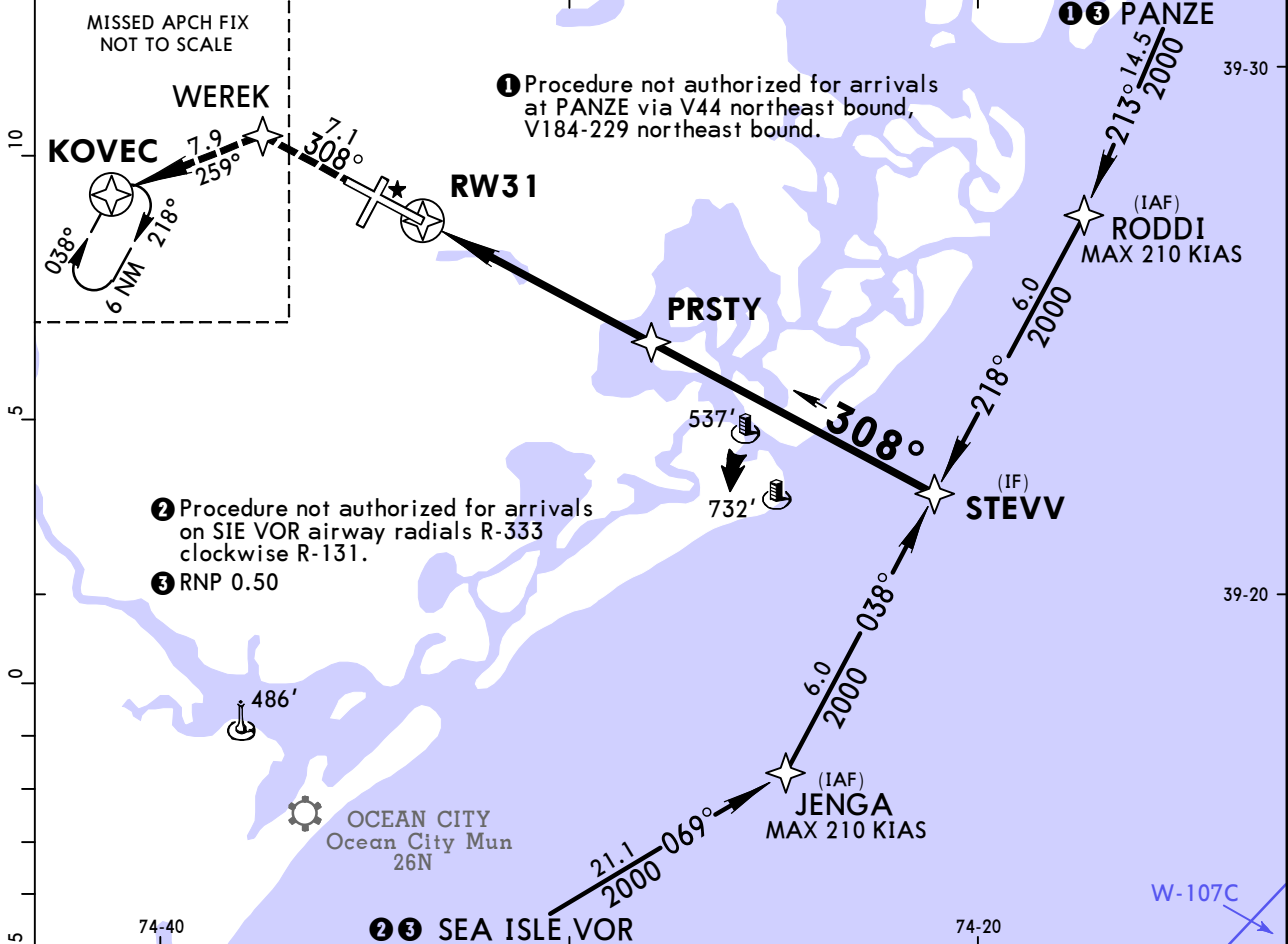
TERPS AMEND OC 12 OCT 2017

KACY/ACY ATLANTIC CITY INTL

JEPPESEN
6 OCT 17
Eff 12 Oct 12-21

ATLANTIC CITY, NJ RNAV (RNP) Z Rwy 31

ATIS 125.725		ATLANTIC CITY Approach (R) 124.6		ATLANTIC CITY Tower 120.3		Ground 121.9		
RNAV	Final Apch Crs 308°	Minimum Alt PRSTY 1700' (1636')	RNP 0.30 DA(H) (CONDITIONAL) 409' (345')	Apt Elev 75' TDZE 64'				
MISSED APCH: Climb to 2000' on track 308° to WEREK and on track 259° to KOVEC and hold.								
Alt Set: INCHES Trans level: FL 180 Trans alt: 18000' 1. AUTHORIZATION REQUIRED. 2. GPS required. 3. Procedure not authorized at night. 4. For uncompensated Baro-VNAV systems, procedure not authorized below -13°C (8°F) or above 54°C (130°F). 5. VGSI and RNAV glidepath not coincident.								



Gnd speed-Kts	70	90	100	120	140	160	REIL PAPI-L 	
Descent angle	3.00°	372	478	531	637	743		849
MAP at DA								

STRAIGHT-IN LANDING RWY 31
RNP 0.30
 DA(H) **409'** (345')

A	RVR 60 or 1/4
B	
C	
D	

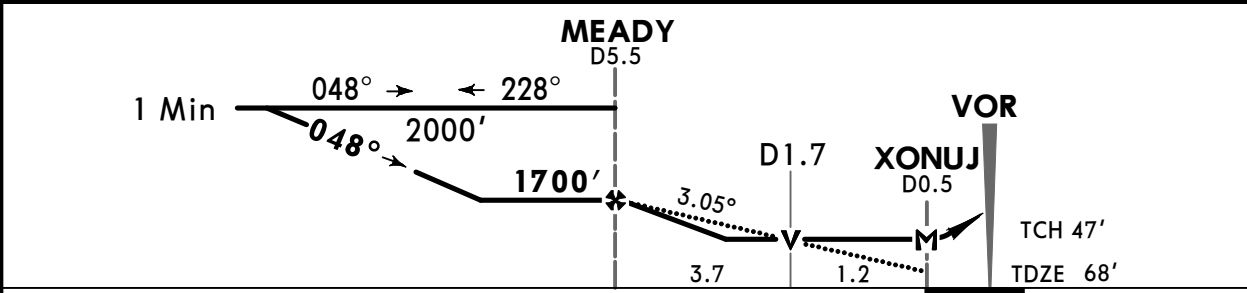
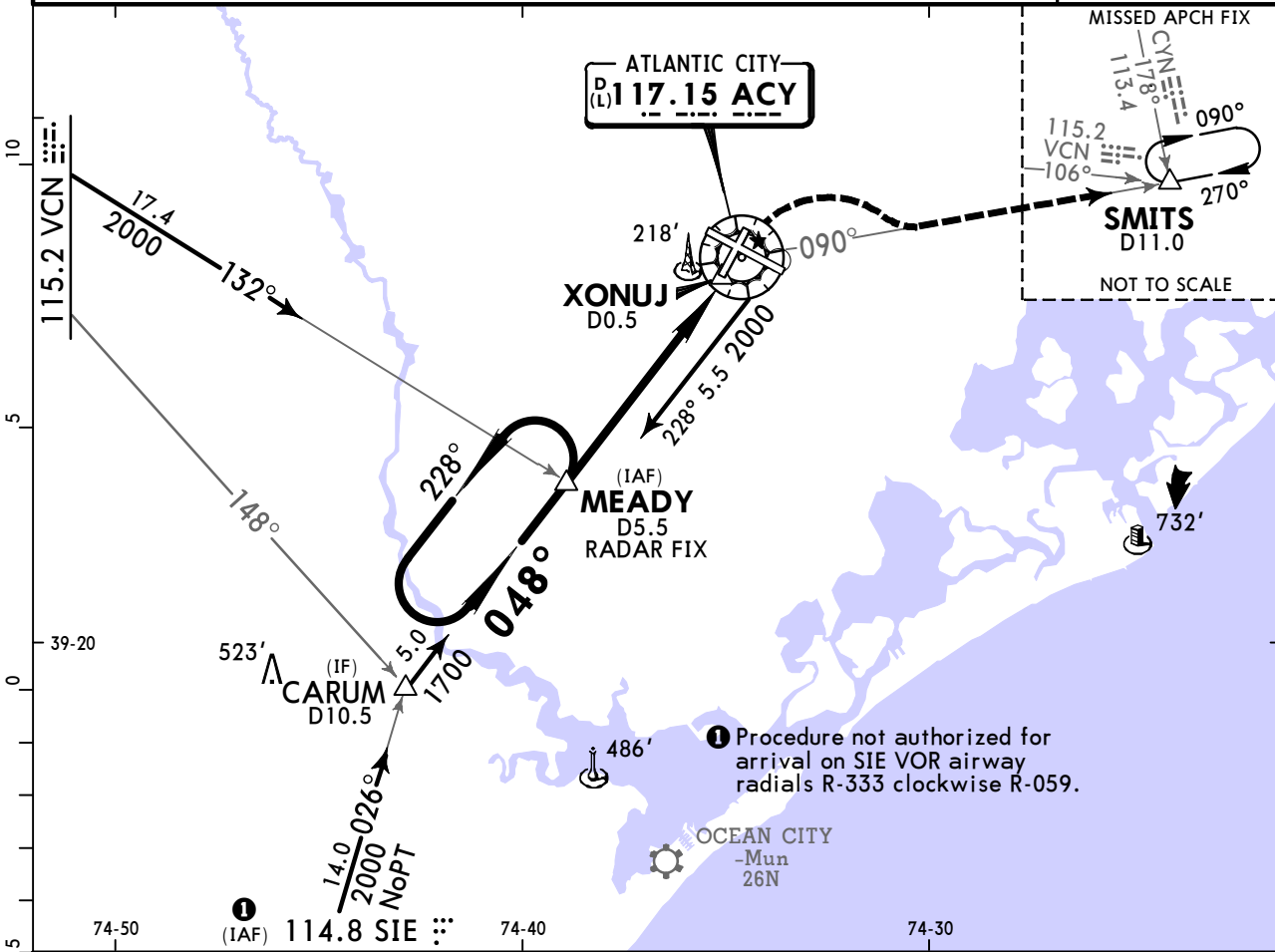
TERPS AMEND 08 27 JUN 2013

KACY/ACY ATLANTIC CITY INTL

JEPPESSEN
5 JUL 24 **(13-1)** **Eff 11 Jul**

ATLANTIC CITY, NJ VOR Rwy 4

ATIS 125.725		ATLANTIC CITY Approach (R) 124.6		ATLANTIC CITY Tower 120.3		Ground 121.9		
VOR ACY 117.15	Final Apch Crs 048°	MEADY 1700' (1632')	MDA(H) 480' (412')	Apt Elev 75' TDZE 68'				
MISSED APCH: Climbing RIGHT turn to 2000' outbound on ACY VOR R-090 to SMITS INT/D11.0 and hold.								
Alt Set: INCHES		Trans level: FL 180		Trans alt: 18000'				
Rwy 4 helicopter visibility reduction below 3/4 SM not authorized.							MSA ACY VOR	



Gnd speed-Kts	70	90	100	120	140	160	PAPI-L	2000' RT on 117.15 R-090	ACY SMITS	
Descent angle	3.05°	378	486	540	648	755				863
MAP at XONUJ/D0.5 or MEADY to MAP	4.9	4:12	3:16	2:56	2:27	2:06				1:50

STRAIGHT-IN LANDING RWY 4				CIRCLE-TO-LAND				
MDA(H) 480' (412')				MDA(H)				
A	1			Max Kts	90			540' (465') - 1
B	1			120			600' (525') - 1	
C	1 1/4			140			620' (545') - 1 1/2	
D	1 1/4			165			640' (565') - 2	

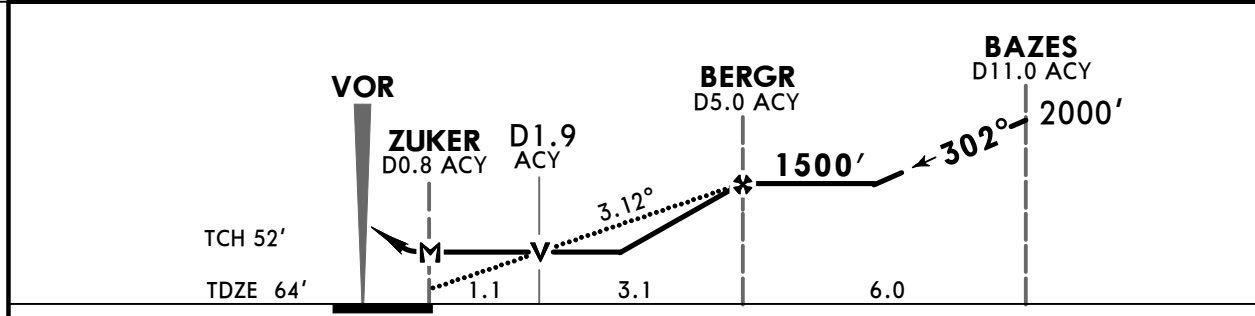
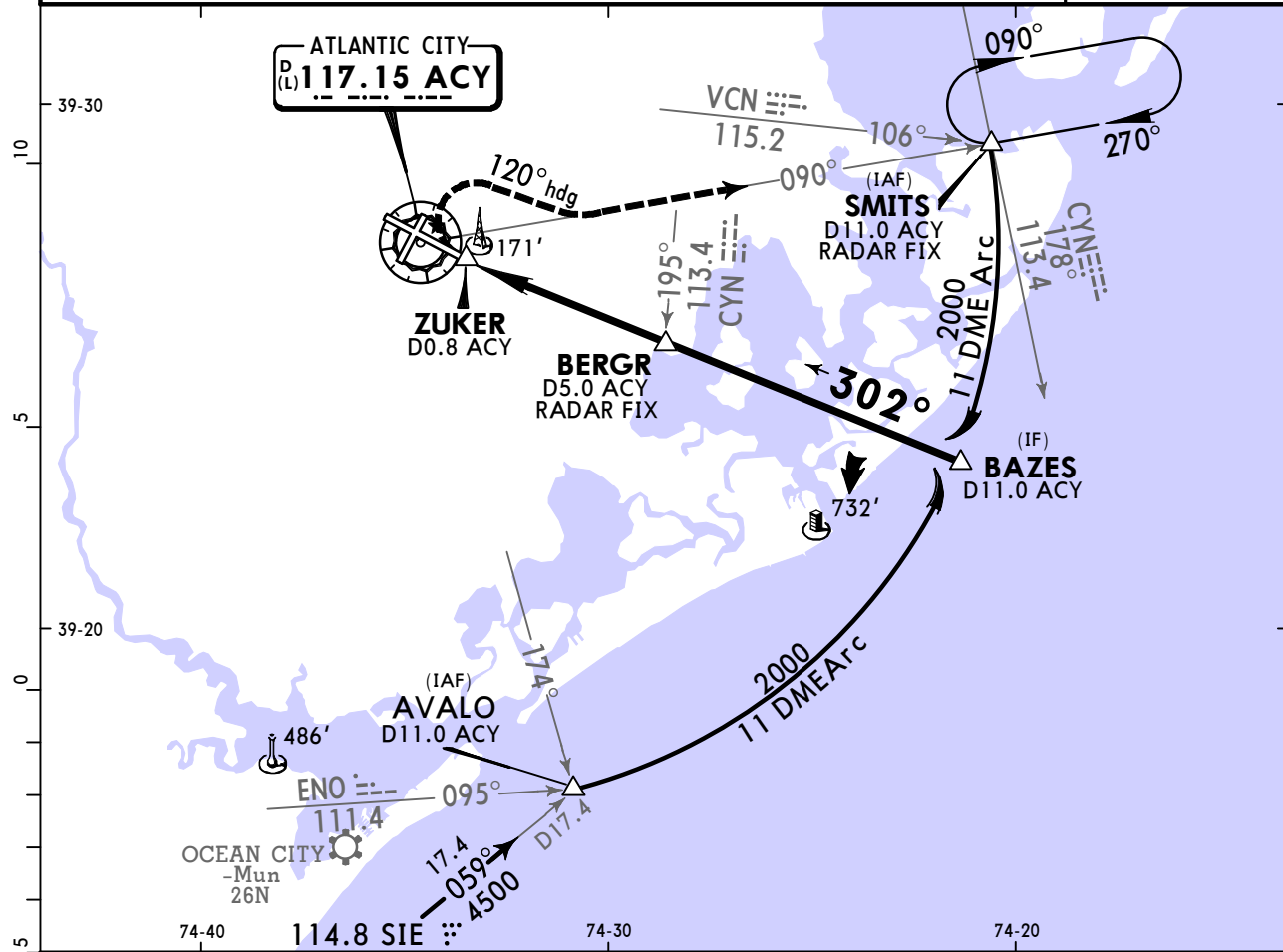
TERPS AMEND 15D 12 OCT 2017

KACY/ACY ATLANTIC CITY INTL

JEPPESEN
5 JUL 24 **(13-2)** Eff 11 Jul

ATLANTIC CITY, NJ VOR Rwy 31

ATIS 125.725		ATLANTIC CITY Approach (R) 124.6		ATLANTIC CITY Tower 120.3		Ground 121.9		
VOR ACY 117.15	Final Apch Crs 302°	BERGR 1500' (1436')		MDA(H) 480' (416')	Apt Elev 75' TDZE 64'		2100 MSA ACY VOR	
MISSED APCH: Climbing RIGHT turn to 2000' via 120° heading and outbound via ACY VOR-090 to SMITS INT/D11.0 and hold.								
Alt Set: INCHES		Trans level: FL 180			Trans alt: 18000'			
1. DME required.		2. VGSI and descent angles not coincident.						



Gnd speed-Kts	70	90	100	120	140	160	REIL PAPI-L	2000' via RT	120° hdg	and 117.15 ACY R-090	SMITS	
Descent Angle	3.12°	386	497	552	662	773						883
MAP at ZUKER or BERGR to MAP	4.2	3:36	2:48	2:31	2:06	1:48						1:35

STRAIGHT-IN LANDING RWY 31		CIRCLE-TO-LAND	
MDA(H) 480' (416')		Max Kts	MDA(H)
A	RVR 55 or 1	90	540' (465') - 1
B		120	600' (525') - 1
C	RVR 60 or 1/4	140	620' (545') - 1 1/2
D		165	640' (565') - 2

TERPS AMEND ID 16 OCT 2014

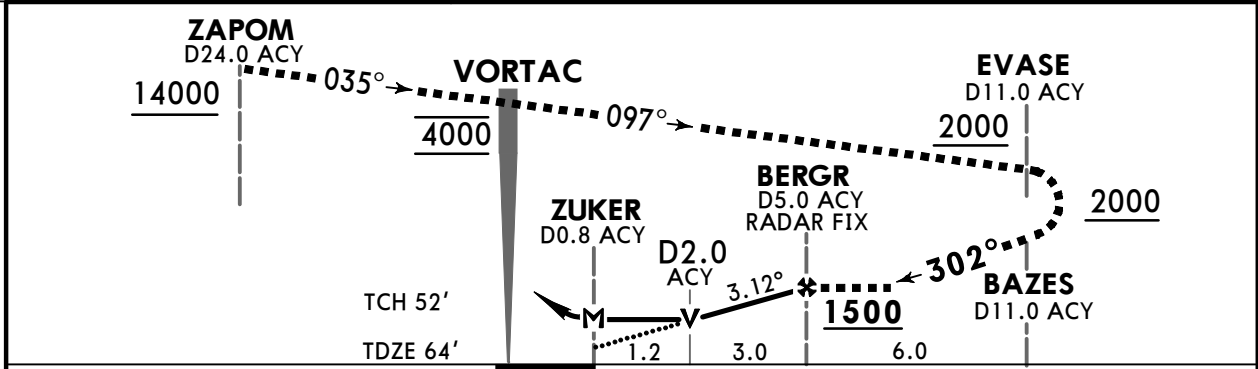
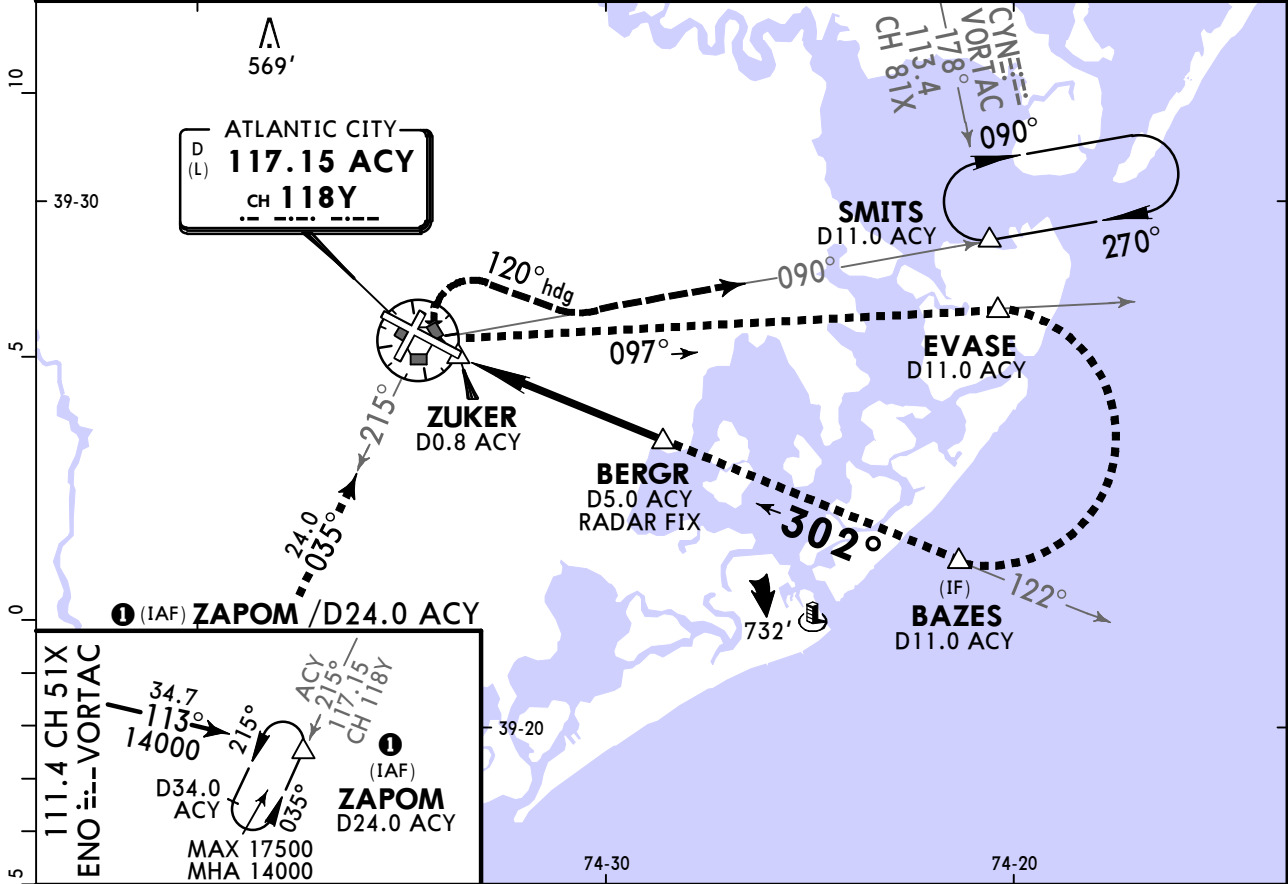
KACY/ACY ATLANTIC CITY INTL

19 JAN 24 **13-5** Eff 25 Jan **HI-VOR or TACAN Rwy 31**



ATLANTIC CITY, NJ

ATIS		ATLANTIC CITY Approach (R)		ATLANTIC CITY Tower		Ground		
125.725	316.15	124.6	327.125	120.3	239.0	121.9	284.6	
VORTAC ACY 117.15	TACAN ACY CH 118Y	Final Apch Crs 302°	BERGR 1500 (1436')	MDA(H) 500' (436')	Apt Elev 75' TDZE 64'			
MISSED APCH: Climbing RIGHT turn to 2000' on heading 120° and on ACY VORTAC R-090 to SMITS INT/D11.0 and hold.								
Alt Set: INCHES		Trans level: FL 180		Trans alt: 18000'				
1. DME or RADAR required. 2. EMERG SAFE ALT 100 NM 4200'. 3. VGSI and descent angles not coincident (VGSI angle 3.00°/TCH 69').								



Gnd speed-Kts	70	90	100	120	140	160	REIL PAPI-L 2000' on heading 120° and 117.15 ACY R-090 to SMITS	
Descent Angle	3.12°	386	497	552	662	773		883
MAP at ZUKER								

TERPS MIL (USAF) AMEND 4C	Military			STRAIGHT-IN LANDING			CIRCLE-TO-LAND				
				MDA(H) 500' (436')			Max Kts				
							MDA(H)				
	A/B	NOT APPLICABLE						A/B	NOT APPLICABLE		
	C							140	620' (545') 600'- V1 1/2		
D	500'- V1 1/4						165	640' (565') 600'- V2			
E							200	760' (685') 700'- V2 1/2			

Chart changes since cycle 04-2025

ADD = added chart, REV = revised chart, DEL = deleted chart.

ACT	PROCEDURE IDENT	INDEX	REV DATE	EFF DATE
-----	-----------------	-------	----------	----------

ATLANTIC CITY, NJ (ATLANTIC CITY INTL - KACY)

TERMINAL CHART CHANGE NOTICES

No Chart Change Notices for Airport KACY

Chart Change Notices for Country USA

Type: Gen Tmnl

Effectivity: Temporary

Begin Date: Immediately

End Date: Until Further Notice

Due to a change of the FAA's statute mile equivalent value for RVR, approach charts with a visibility of RVR 55 or 1 1/4 should be RVR 55 or 1.

Type: Gen Tmnl

Effectivity: Temporary

Begin Date: Immediately

End Date: Until Further Notice

ILS Procedures RVR 1800 Statute Mile Equivalent-U.S. FAA Airports On a number of ILS approach procedures at U.S. FAA airports, the published landing visibility value of RVR 1800 depicts a Statute Mile equivalent value of 3/8 Statute Mile. According to FAA FAR and AIM publications, the Statute Mile equivalent for RVR 1800 should be 1/2 Statute Mile Beginning with the revision dated 20 May 2016 affected U.S. ILS approach charts will be updated to depict the appropriate Statute Mile equivalent visibility of 1/2 Statute Mile.

Type: Gen Tmnl

Effectivity: Temporary

Begin Date: Immediately

End Date: Until Further Notice

MALSR & SSALR RAIL out Lighting Condition - U.S. FAA Locations The FAA has confirmed that for MALSR and SSALR approach light systems, the RAIL out, or partial system condition, is not applicable when determining landing visibilities When any component of a MALSR or SSALR approach light system is inoperative, such as RAIL out, the landing visibilities should be determined as if the entire lighting system were inoperative (ALS out). Therefore, the RAIL out visibility column should be disregarded.